



**EZ STEEL**

**EZ STEEL**  
WWW.EZSTEELIDAHO.COM

### STANDARD COLOR CHART

Cool coatings with premium heat-reflective technology from Dura Coat.

Durapon 70™ Full Strength 70% PVDF and Dura Coat XT40S™ Siliconized Polyester (SMP) Pre-Finished Steel Flat Sheets & Coil.

\* Metallic Color

\*\* Premium Finish



Deep Black



Matte Black



Charcoal Gray



Musket Gray



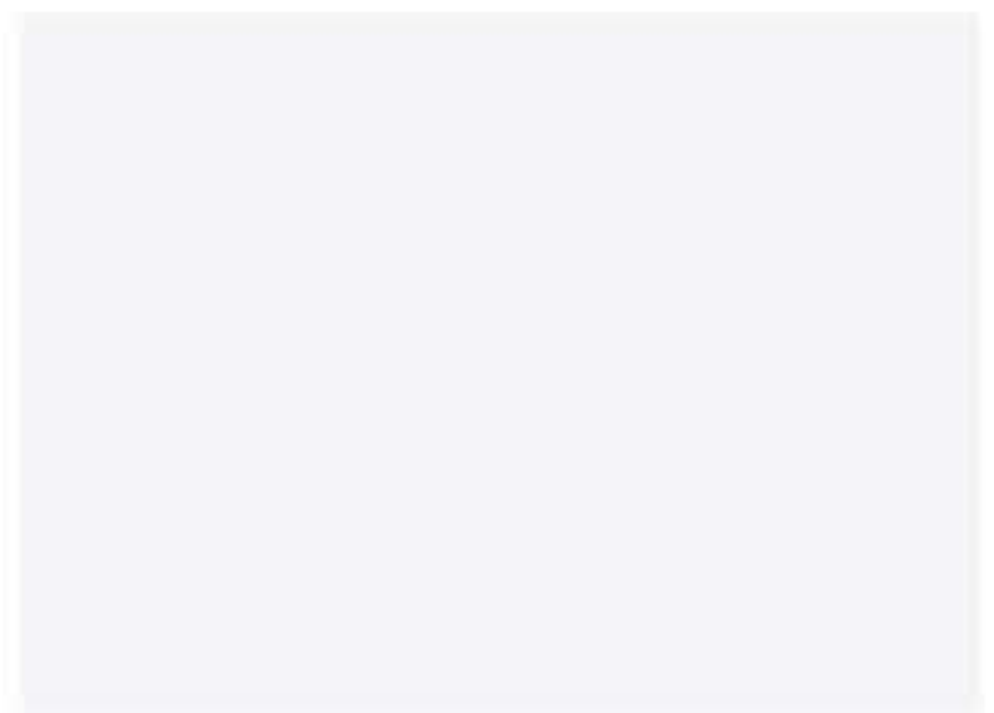
Slate Gray



Ash Gray



Almond



Bright White



Bone White



Stone White



Cityscape



Pebble Clay



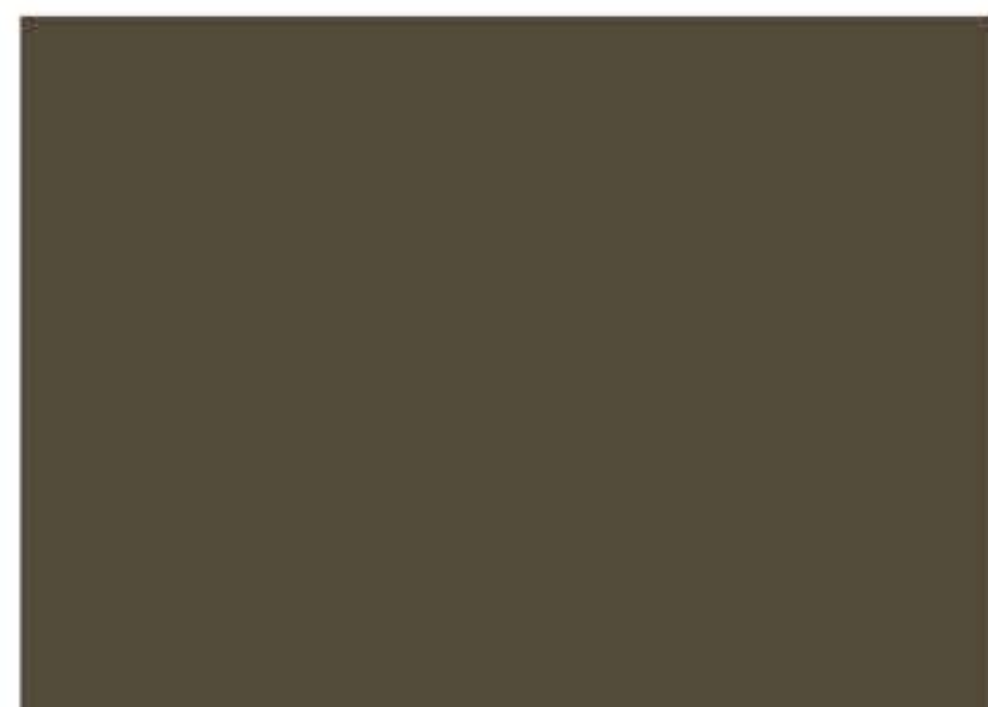
Sandstone



Sierra Tan



Antique Ivory



Medium Bronze



Dark Bronze



Extra Dark Bronze



Regal Red



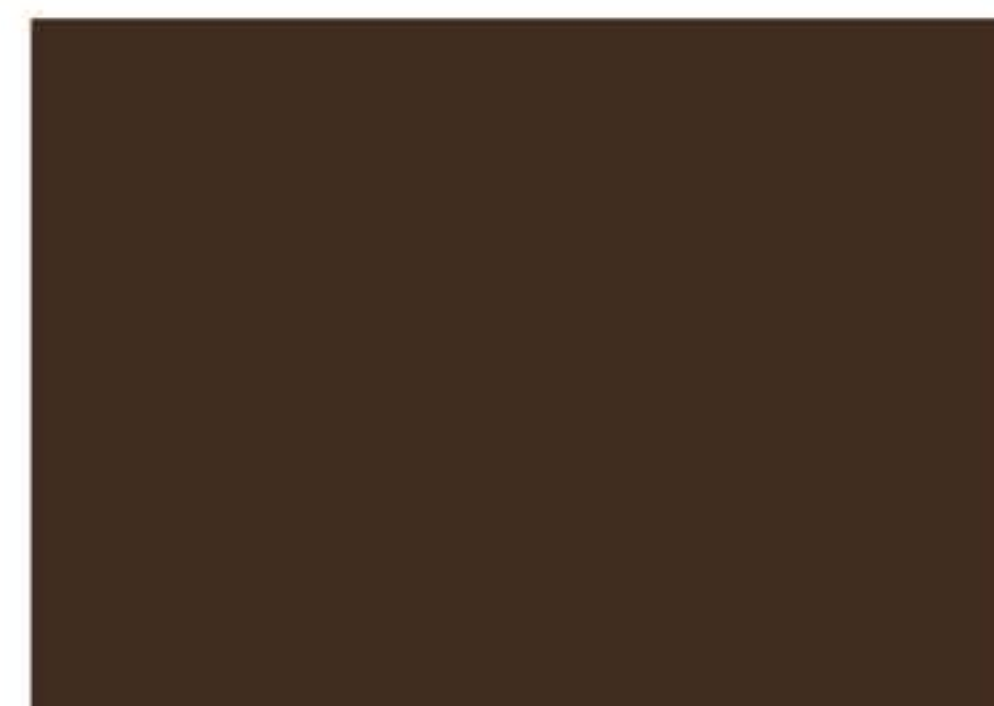
Colonial Red



Burgundy



Terra Cotta



Mansard Brown



Burnished Slate



Hartford Green



Classic Green



Hemlock Green



Teal



Slate Blue



Royal Blue



Galvalume Plus



\*Copper Penny



\*Weathered Zinc



\*Silver Metallic



\*Champagne



\*Aged Copper



\*\* Black Ore



\*\* Vintage



\*\* Western Rust



\*\* Rustic Rawhide



\*\* Custom Color



## TEX3D SMP Finishes

Cool coatings with premium heat-reflective technology and tactile textured finish from Dura Coat. Dura Coat XT40S™ Siliconized Polyester (SMP) Pre-Finished Steel Flat Sheets & Coil.

\* Metallic Color  
\*\* Premium Finish



Matte Black



Charcoal Gray



Musket Gray



Slate Gray



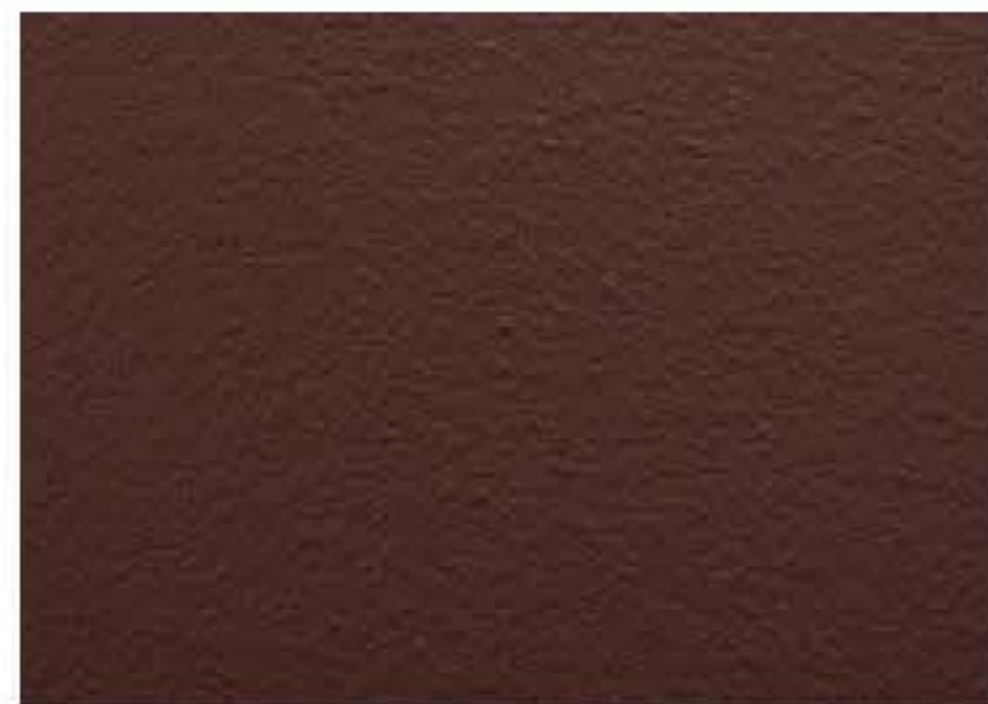
Dark Bronze



Burnished Slate



Mansard Brown



Burgundy



Colonial Red



Terra Cotta



Sierra Tan



Medium Bronze



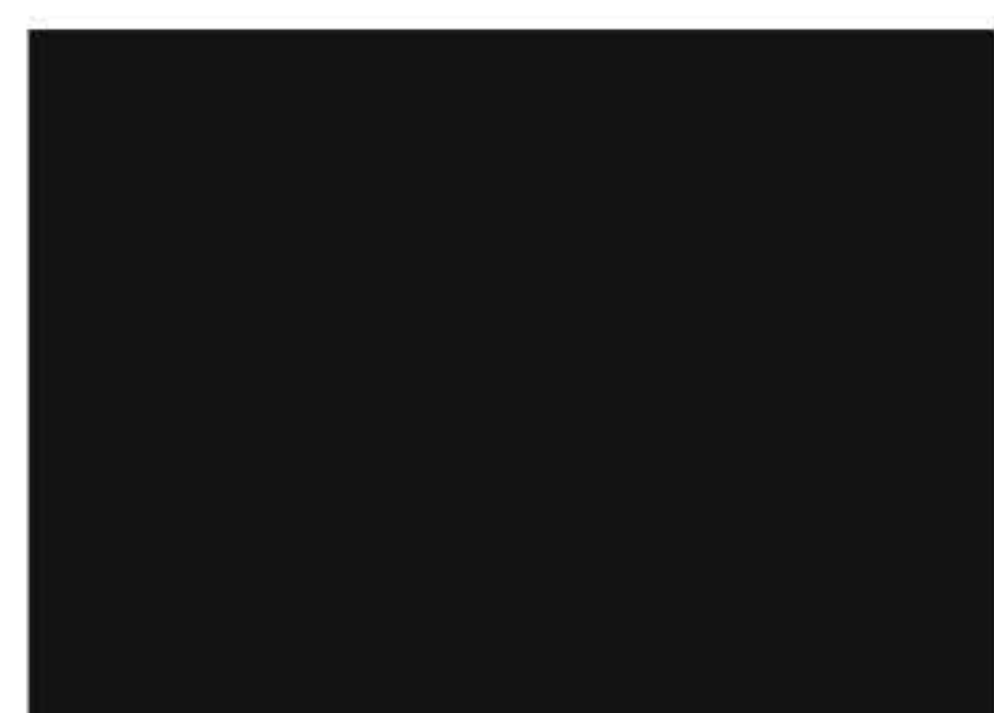
Hartford Green



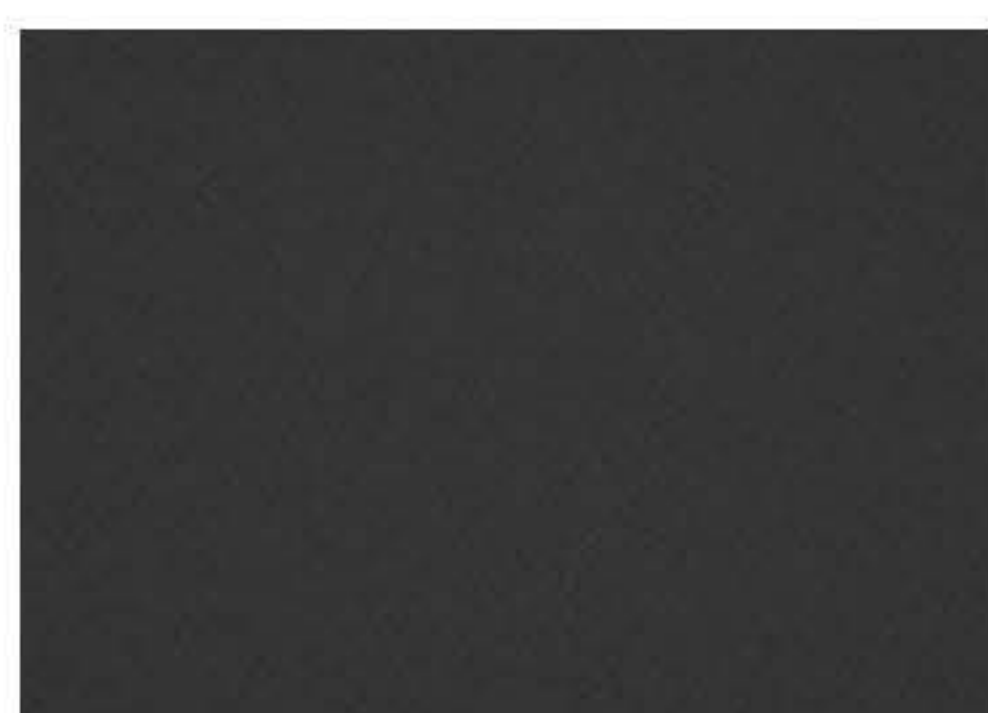
Classic Green

## Ultra Low Gloss PVDF Finishes

Cool coatings with premium heat-reflective technology and Ultra Low-Gloss, Low-Sheen technology from Dura Coat. Dura Coat Durapon 70™ Full-Strength 70% PVDF Pre-Finished Steel Flat Sheets & Coil.



Deep Black



Carbon



Charcoal Gray



Slate Gray



Dark Bronze



Burnished Slate



Iron Ore

*Metal samples and additional custom colors are available upon request. Please refer to the Stock Availability matrix for gauge, width, and paint finish availability.*

*Oil canning is an inherent part of light gauge cold-formed metal products and is not cause for coil, sheet, or panel rejection. Protective film must be removed immediately after installation. Color and sizes can change without notice. Additional sizes, gauges, and colors may be available, please contact your local sales representative for more information.*

*Colors represented on this electronic chart may not exactly match actual material. All colors should be verified using actual metal samples. Mismatch of electronic representations and actual material shall not be accepted as cause for rejection. Many finishes are production batch-specific and may result in slight variations in visual match. Do not mix or use materials purchased from separate sales orders on individual projects. Visual variation between separate order batches used on individual projects shall not constitute cause for rejection or claim.*

